

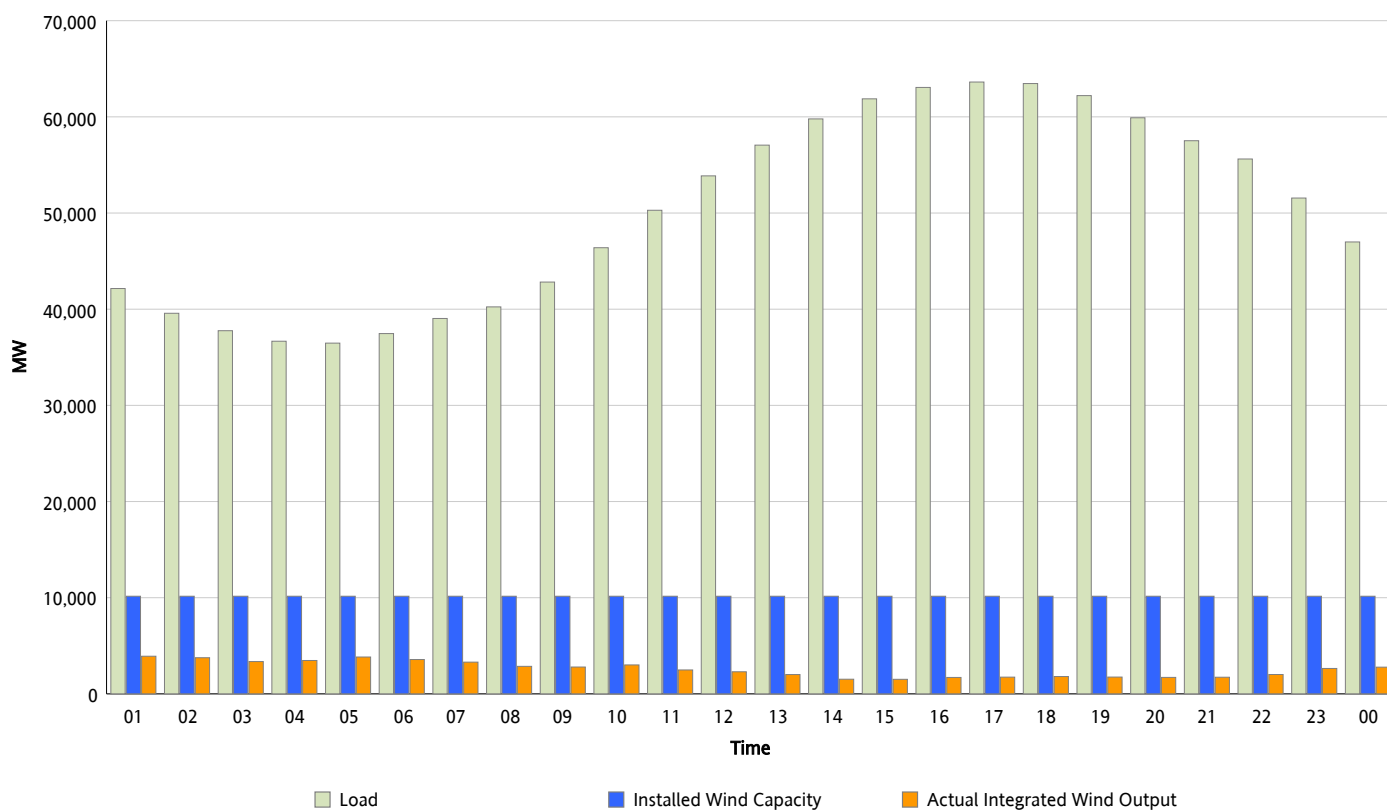


## ERCOT Grid Operations

### Wind Integration Report : 07/10/2013

Peak Load	63,622 MW
Load Peak Hour (HE)	17
Wind Over Peak	1,739 MW
Wind Record 05/02/13	9,674 MW
Max Wind Value*	4,052 MW
Wind Peak Time	00:03
Wind Integration %	9.31 %

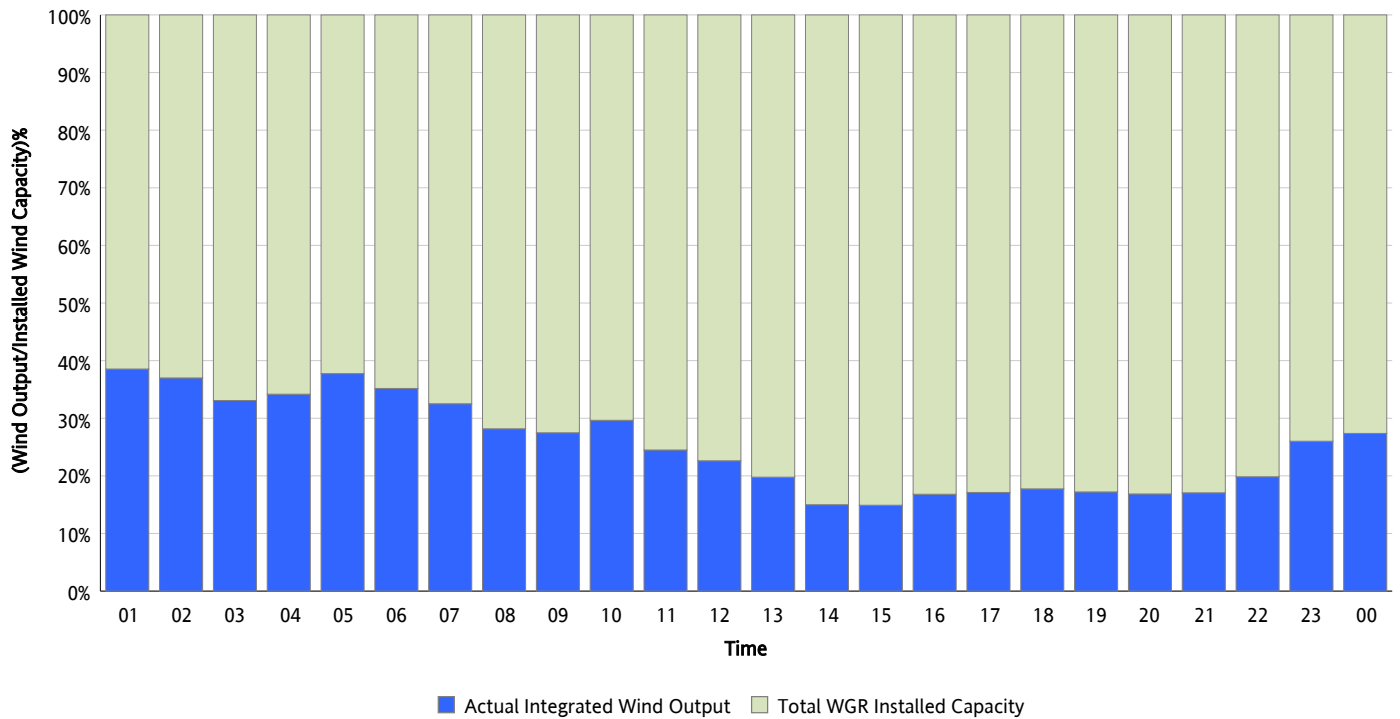
**Hourly Average Actual Load vs. Actual Wind Output**  
**07/10/2013**



*\* Wind Record and Wind Max represent instantaneous values and the rest of the values are integrated over the hour*

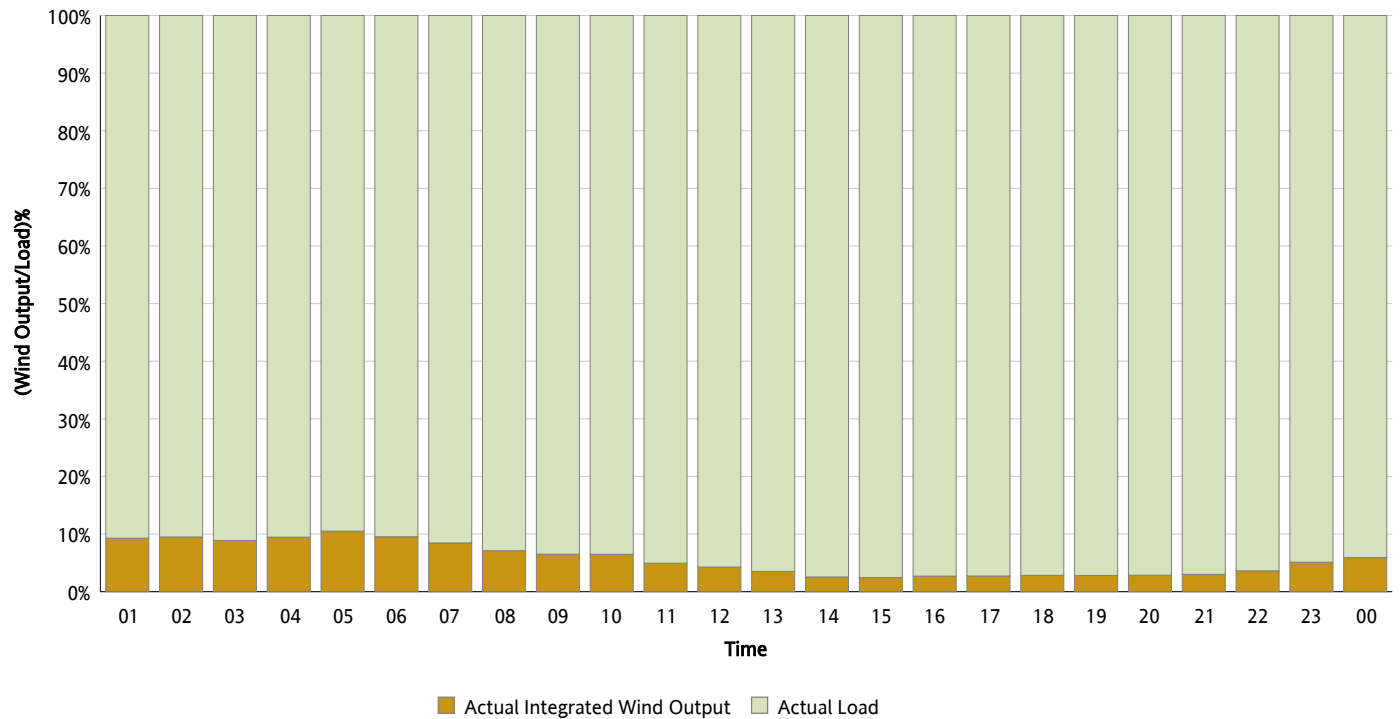
## Actual Wind Output as a Percentage of the Total Installed Wind Capacity

07/10/2013



## Actual Wind Output as a Percentage of the ERCOT Load

07/10/2013



## ERCOT Load vs. Actual Wind Output

07/03/2013 - 07/10/2013

